

APPLICATION:

JOB NAME:

QUANTITY:                      ITEM NO.

PRODUCT NAME:  
 DrainKing WASTE VALVE  
 ROUGH CHROME

SPECIAL CONFIGURATION  
 CHECK BASE MODEL AND OPTIONS

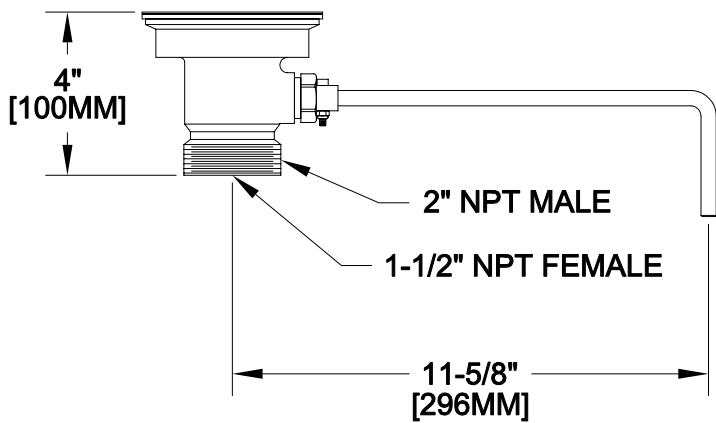
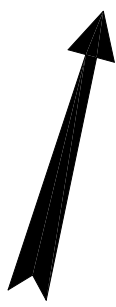
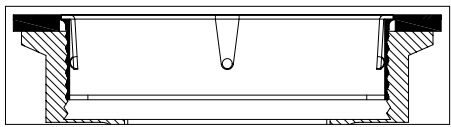
MODEL:  
 28932 WITH FLAT STRAINER

OPTIONS OR MODIFICATIONS:  
 OTHER \_\_\_\_\_

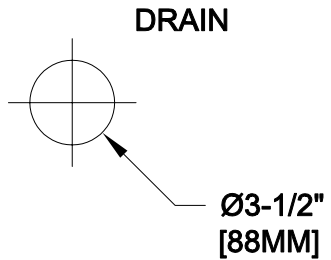
- FEATURES
- \* DUAL TEFLON SEALS
  - \* STAINLESS STEEL BALL
  - \* CAST RED BRASS BODY, CHROME PLATED
  - \* EXTRA STURDY STAINLESS STEEL CLAMPING RING
  - \* "CLEAR THROUGH" OPENING - NO NEED TO DISASSEMBLE IF SNAKING IS REQUIRED
  - \* INDUSTRY STANDARD "SEALING" ANGLE - FITS FLUSH TO STANDARD STAINLESS STEEL SINKS
  - \* STAINLESS STEEL FLAT STRAINER
  - \* 1/4 TURN FULLY OPENS AND CLOSES VALVE

DRAIN RATE  
 \* 12 GPM

SHIPPING WEIGHT  
 \* 5.0 LBS



**ROUGH-IN:**



**FISHER**  
 FISHER MANUFACTURING COMPANY  
 TOLL FREE: 800-421-6162 - FAX: 800-832-8238  
 information@fisher-mfg.com - www.fisher-mfg.com